

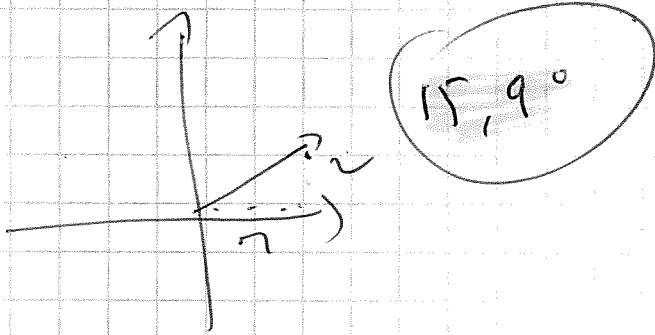
Corrige  
Problèmes supplémentaires



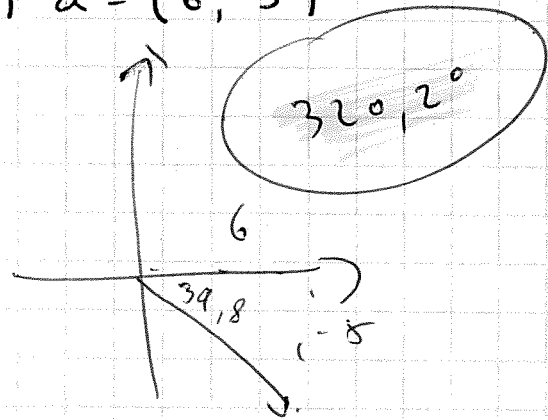
55

#1 Trouve l'orientation des vecteurs donnés.

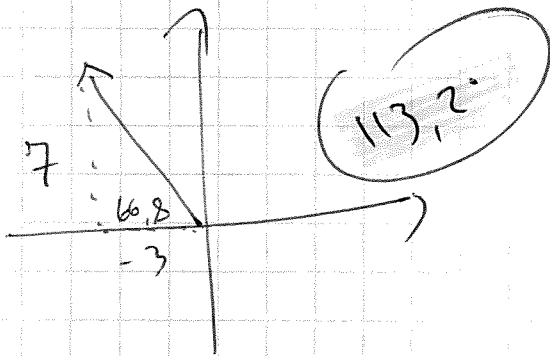
a)  $\vec{b} = (7, 2)$



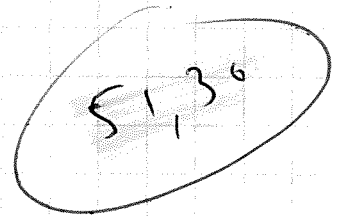
b)  $\vec{a} = (6, -5)$



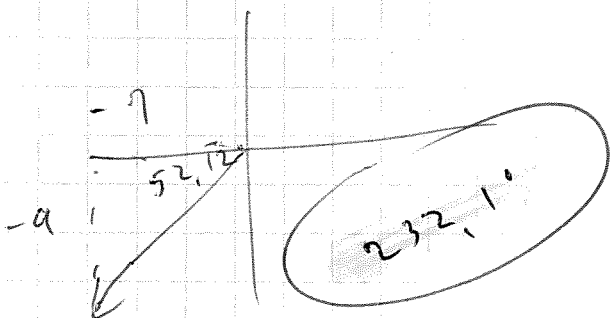
c)  $\vec{v} = (-3, 7)$



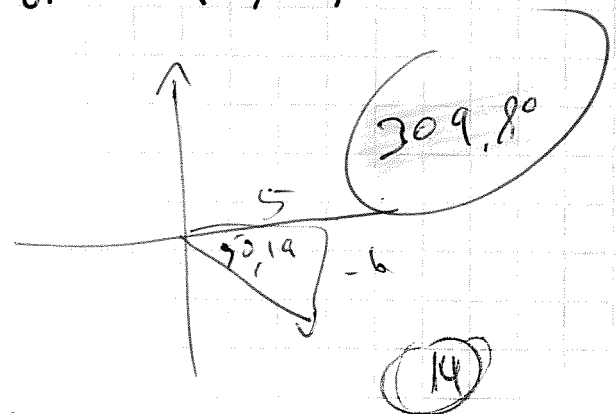
d)  $\vec{w} = (4, 5)$



e)  $\vec{s} = (-7, -9)$



f)  $\vec{d} = (5, -6)$



#2 Trouve la norme et les composantes du vecteur  $\vec{w}$ .

