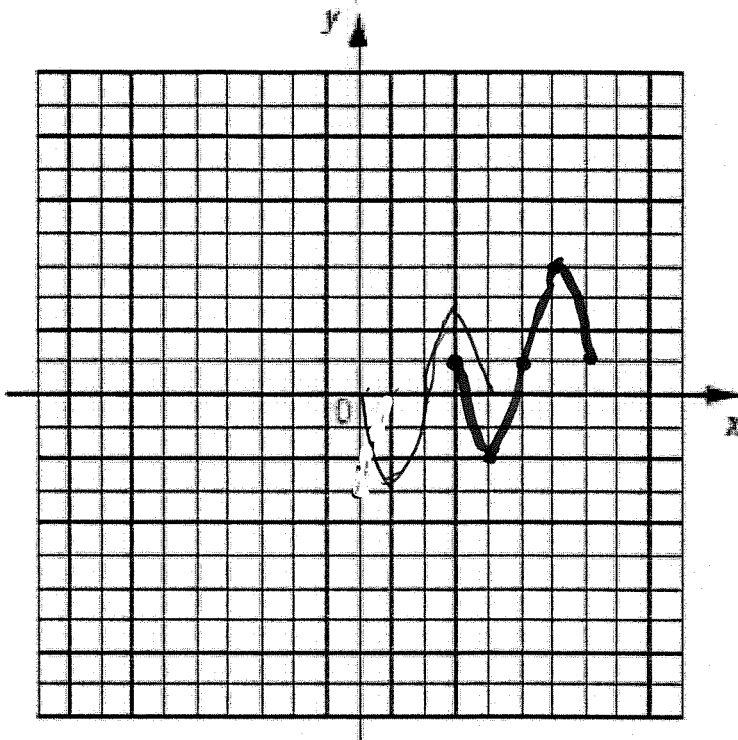


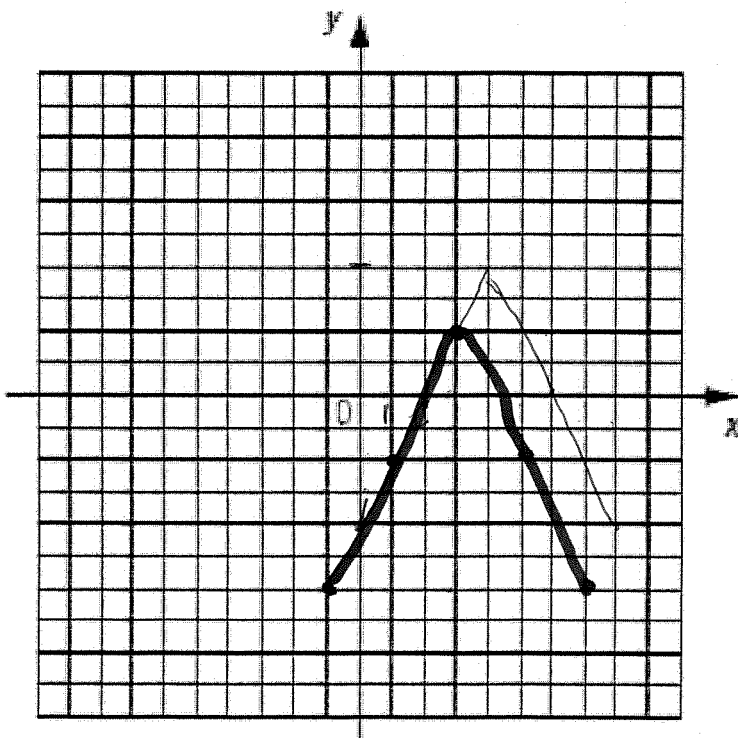
Tracer une fonction sinusoidale

1- Tracer la fonction suivante : $f(x) = -3\sin\frac{\pi}{2}(x-3) + 1$



$A = |-3|$
 $P = 2\pi \div \frac{\pi}{2} = 4 = P$
 $(h, k) (3, 1)$

2- Tracer la fonction suivante : $f(x) = -4\cos\frac{\pi}{4}(x+1) - 2$



$A = |-4| =$
 $P = 2\pi \div \frac{\pi}{4} = 8 = P$ case:
 $(h, k) (-1, -2)$