

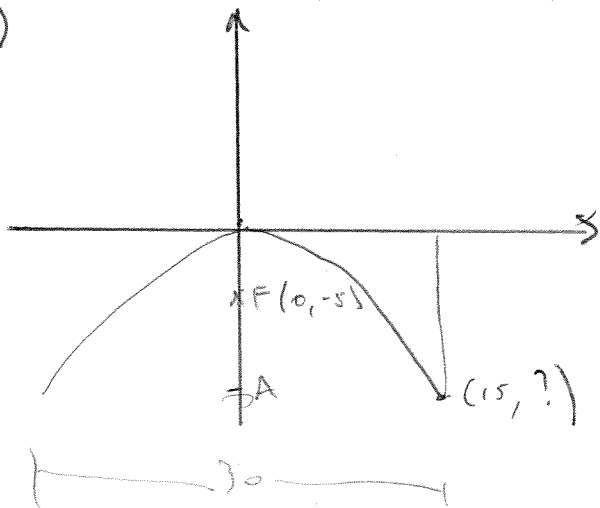
# corrigé feuille d'exercices

(0, c)  
#1 Foyer = (0, 0.5) et on a (0.75, ?)

$$x^2 = 4cy$$
$$(0.75)^2 = 4(0.5)y$$

$$\frac{0.5625}{2} = y \Rightarrow \underline{\underline{0.28125}}$$

#2



$$x^2 = 4cy$$
$$15^2 = 4(-5)y$$

$$\frac{225}{-20} = y$$

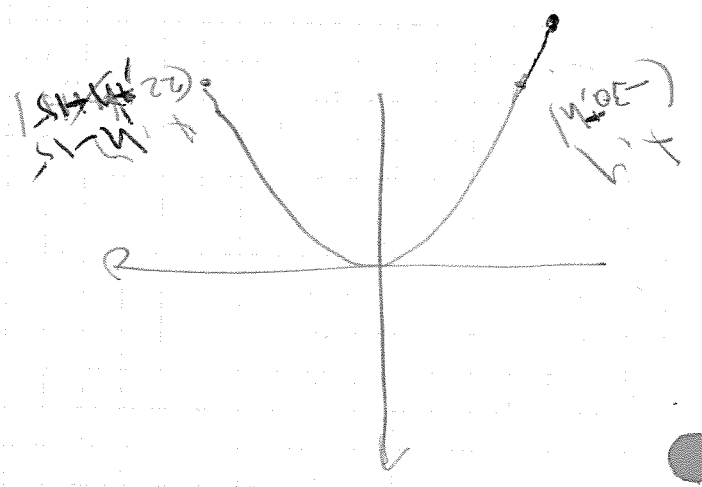
$$\underline{\underline{-11.25 = y}}$$

positif  
car c'est  
une distance



#6

on centre à l'origine



#5

a)  $y^2 = 4cx$

$+10^2 = 4c(-30)$

$-900 = c$

$4c \cdot x$

donc  $y^2 = -3,33x$

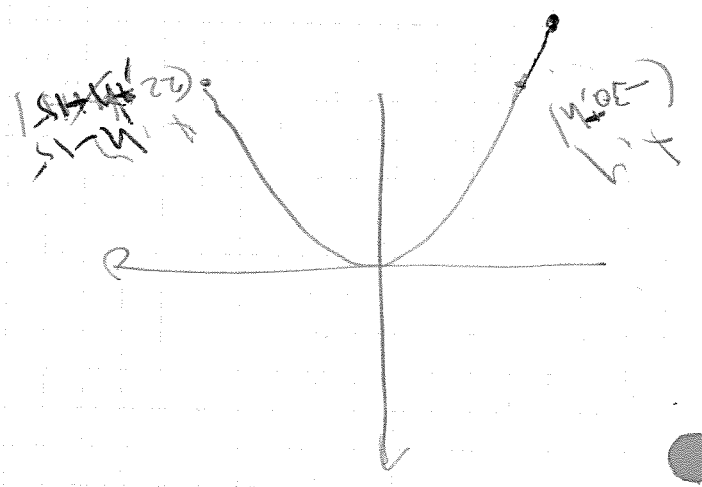
$(-30, +10)$   
 $x, y$

b)  $x = -10$

$y^2 = 33,3 \Rightarrow y = 5,77 \times 2 = 11,5 \text{ cm}$

#6

on centre à l'origine



#5

a)  $y^2 = 4cx$

$+10^2 = 4c(-30)$

$-900 = c$

$4c \cdot x$

donc  $y^2 = -3,33x$

$(-30, +10)$   
 $x, y$

$y^2 = 33,3 \Rightarrow y = 5,77 \times 2 = 11,5 \text{ cm}$

$x^2 = 4cy$   
 $900 = 4ch$   
 $480 = 4ch - 60c$   
 $480 + 60c = 4ch$   
donc  $484 = 900 - 60c$   
 $-6,93 = c$

Alors  $x^2 = 4(6,93)y$   
on remplace  $x$  par  $-30$

$900 = y \Rightarrow 30,46 \text{ m}$   
29,92