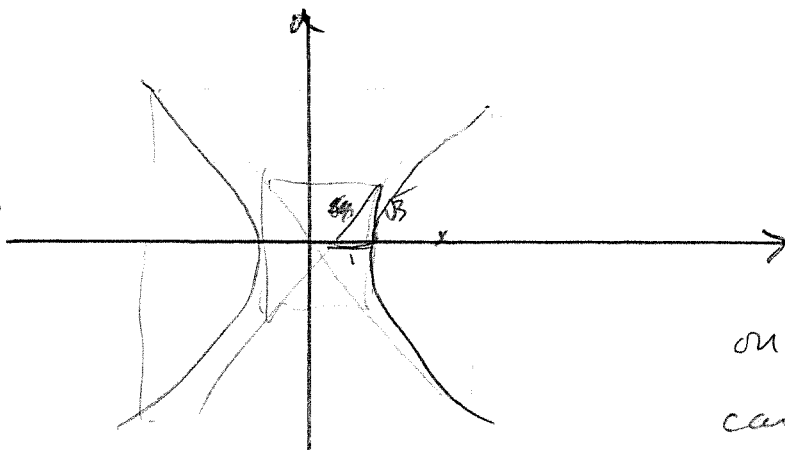


# corrigé feuille d'exercices

#1

a)



$$\frac{x^2}{1} - \frac{y^2}{3} = 1$$

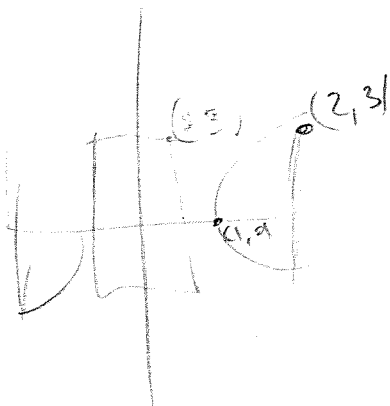
on remplace  $y$  par 3  
car  $\frac{6}{2} = 3$

$$\frac{x^2}{1} - \frac{3^2}{3} = 1$$

$$x = \pm 2 \text{ donc}$$

$$\underline{\underline{2 \times 2 = 4}}$$

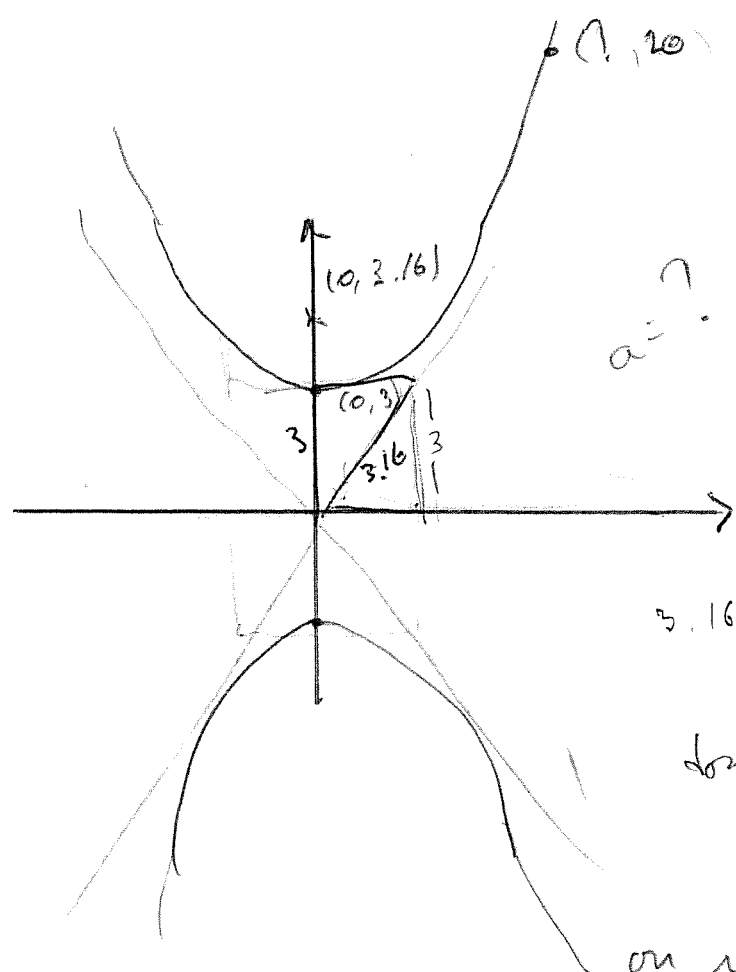
b)



$$\frac{9-2^2}{3-1}$$

$$\text{donc } \underline{\underline{2-1=1 \text{ car}}}$$

#2



$a = 7$

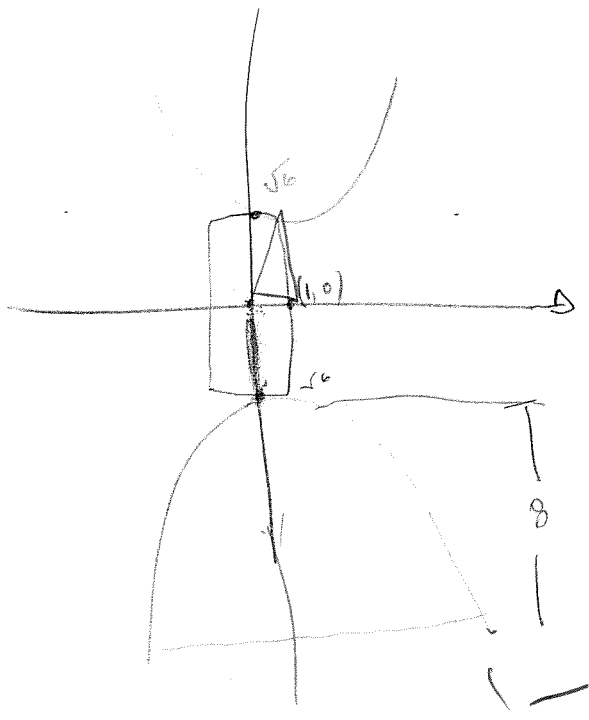
$$3.16^2 - 3^2 = 5 = 1$$

$$\text{donc } \frac{x^2}{1} - \frac{y^2}{9} = -1$$

on remplace y par 20

$$y = 6.59 \cdot x^2 - \underline{\underline{13.20}}$$

#3



$$\frac{x^2}{1} - \frac{y^2}{6} = -1$$

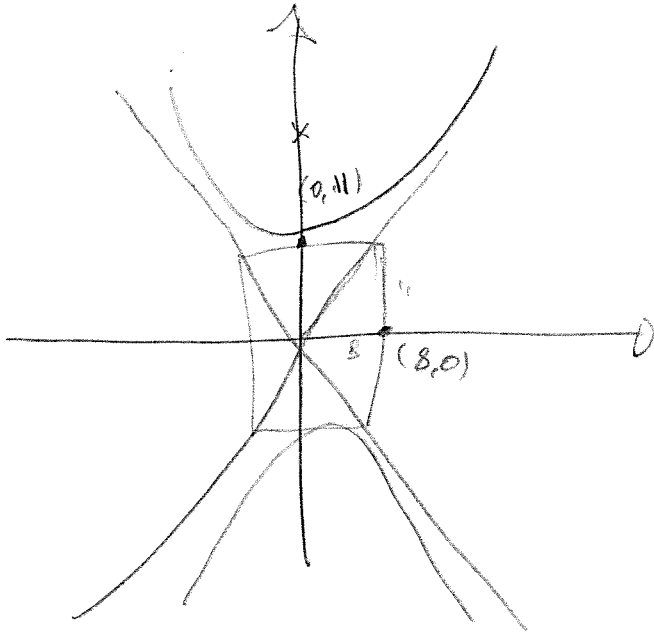
$b = \sqrt{6}$  donc b hauteur

$$\sqrt{6} + 8 = 10.44$$

après  $\frac{x^2}{1} - \frac{10.44^2}{6} = -1$

$$x = 4.14 \cdot x^2 \Rightarrow \underline{\underline{8.29}}$$

#4

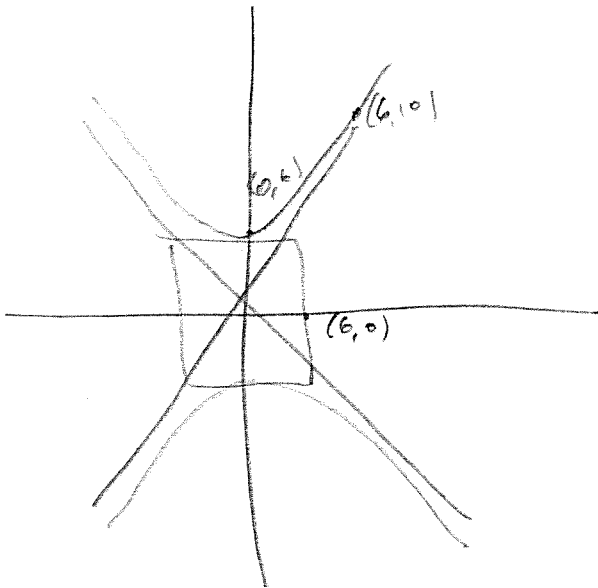


$$\frac{x^2}{64} - \frac{y^2}{121} = -1$$

$$8^2 + 11^2 = \sqrt{\quad} = 13,6 \text{ KZ} =$$

27,2

#5



$$\frac{x^2}{a^2} - \frac{y^2}{b^2} = -1$$

$$\frac{36}{a^2} - \frac{100}{36} = -1$$

$$a = 4,5$$

Keip:  $\frac{x^2}{20,34} - \frac{y^2}{36} = -1$