

Réponses de la feuille d'exercices sur l'ellipse.

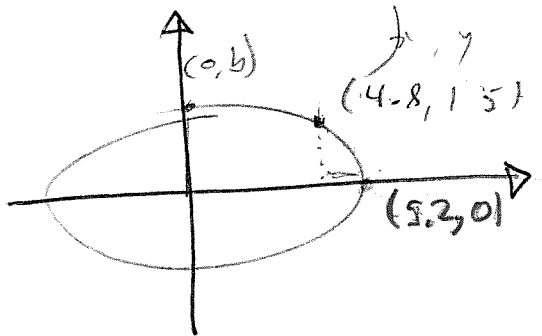
#1

$$\frac{x^2}{100} + \frac{y^2}{36} = 1 \quad \text{ou remplace } x \text{ par } -8$$

$$\text{donc la hauteur} = \frac{64}{100} + \frac{y^2}{36} = 1$$

$$y = 3,6$$

#2

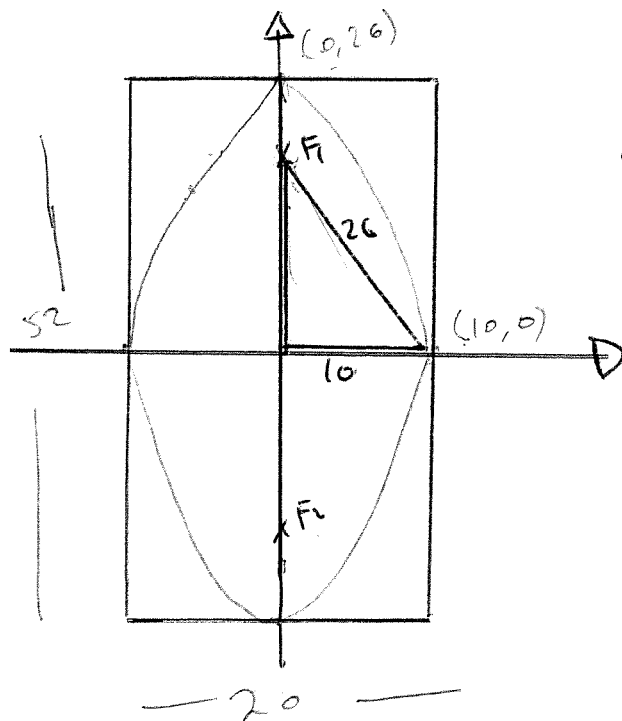


$$\text{Donc } \frac{4,8^2}{5,2^2} + \frac{1,5^2}{b^2} = 1$$

$$b = 3,87$$

$$\text{Rép. } 8 + 3,87 = 11,90$$

#3



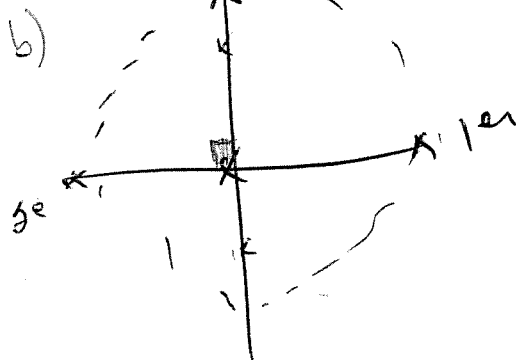
$$a) \quad 26^2 - 10^2 = F_1^2$$

$$24 = F_1$$

$$\times 2$$

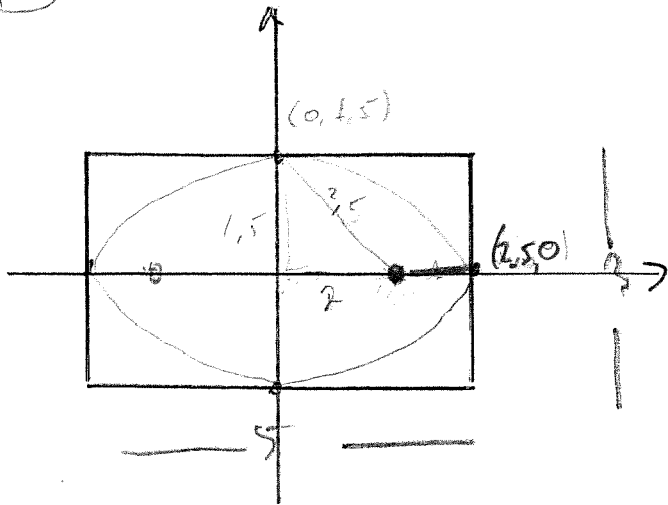
$$48 \text{ cm}$$

Perimètre en K



(1)

#4



$$2,5^2 - 1,5^2 = F_1^2$$

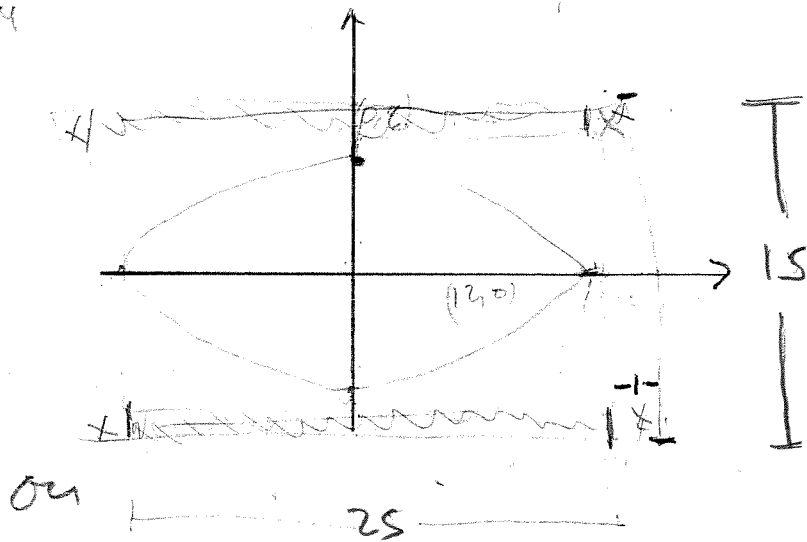
$$2 = F_1$$

Alors $2,5 - 2 = 0,5 \text{ m}$

#5

$$x^2 + 4y^2 = 144$$

$$\frac{x^2}{144} + \frac{y^2}{36} = 1$$



$$\begin{array}{r} 27 \times 15 \\ - 25 \times 13 \\ \hline \hline 80 \text{ m}^2 \end{array}$$

1°) $25 \times 1 = 25 \times 2$ pour les 2 côtés

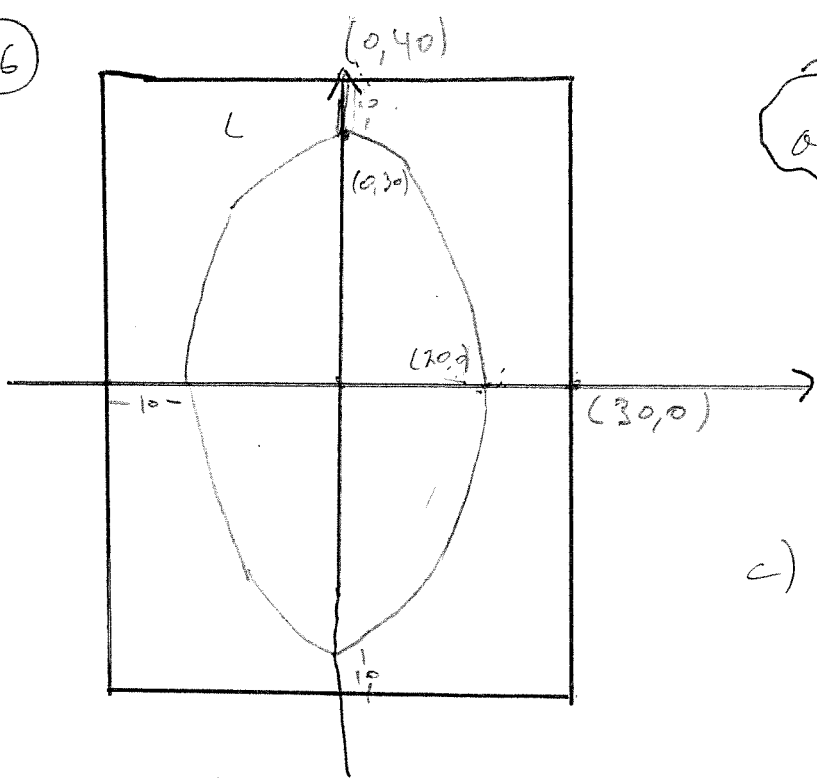
$$\boxed{50}$$

2°) $15 \times 1 = 15 \times 2$ pour les 2 côtés

$$\boxed{30}$$

donc 80 m^2

#6



a) 40 x 60 cm

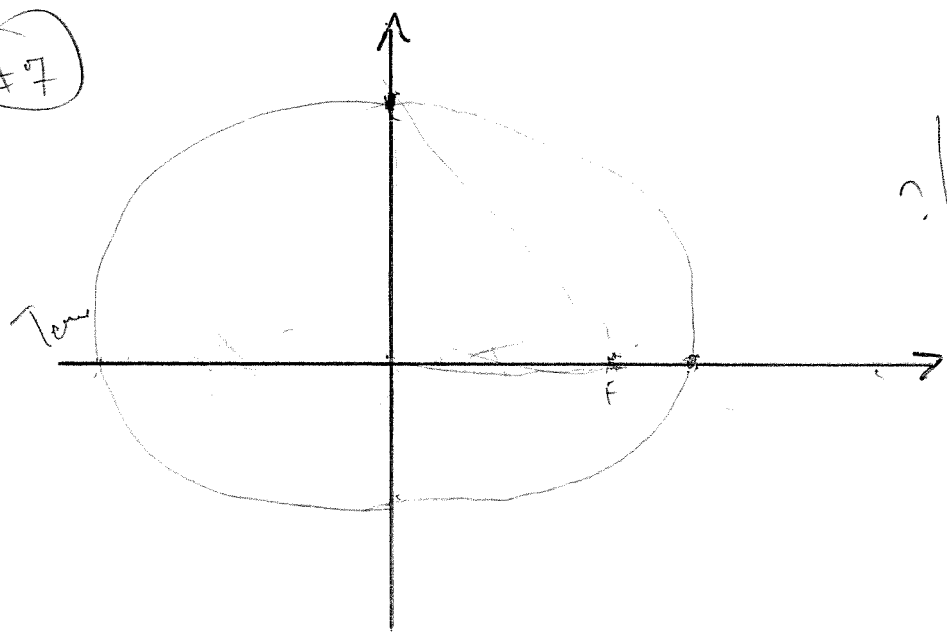
$$b) \frac{x^2}{20^2} + \frac{y^2}{30^2} = 1$$

c)

x	y
5	±29
10	±25,9
15	±19,8

O.K.

#7



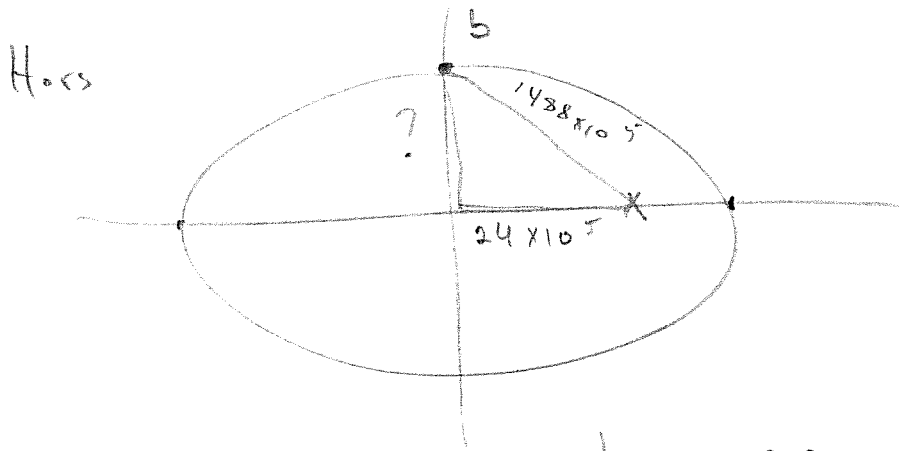
15 | 200 000 146400 000

$$\text{total} = \frac{297600000}{2}$$

$$a = 148800000$$

(3)

Donc coordonnée du foyer = $148800000 - 146400000$
 2400000



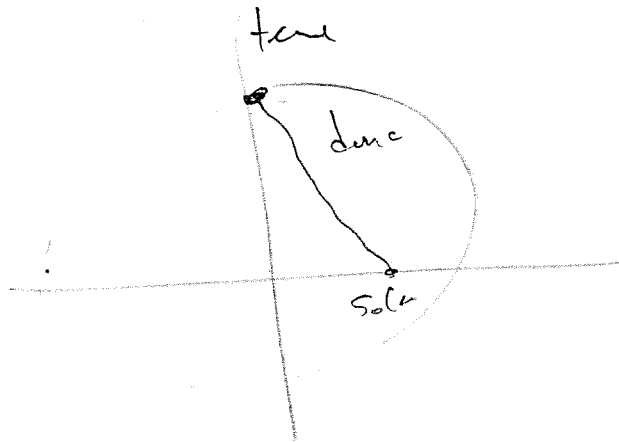
donc avec pythagore :

$$b = 1.488 \times 10^5$$

Réponse a)

$$\frac{x^2}{(1.488 \times 10^8)^2} + \frac{y^2}{1.487 \times 10^8} = 1$$

Réponse b)



pas arrivé