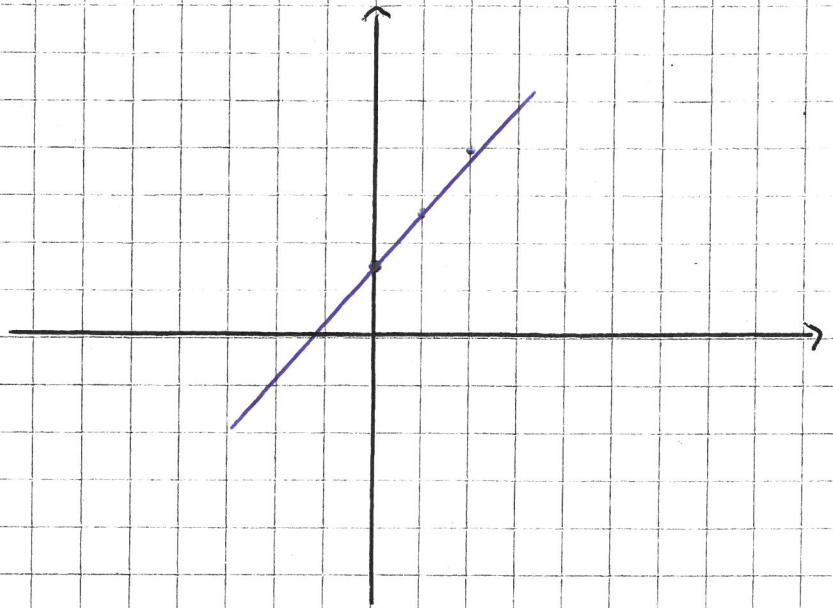


Nom: LOUIGI

1)  $-5x + 4y = 6$

$$y = \frac{5x + 6}{4}$$

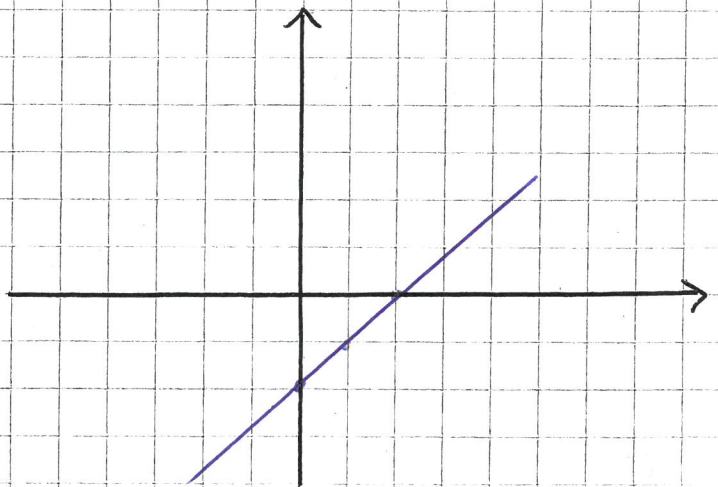
x	y
0	1,5
1	2,75
2	4



2)  $y - x + 2 = 0$

$$y = x - 2$$

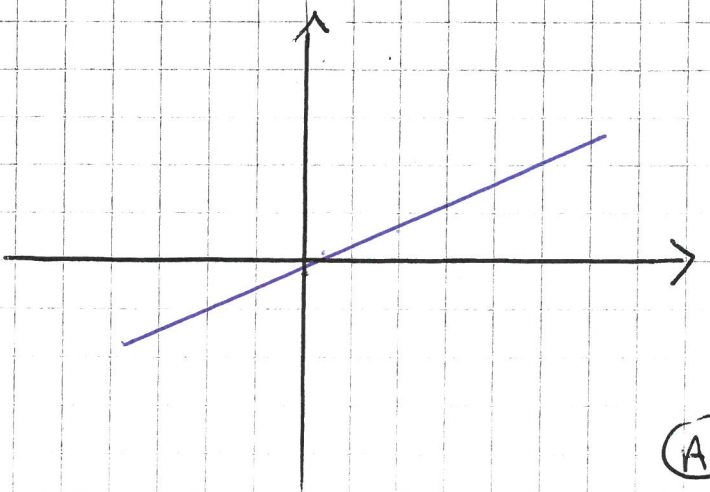
x	y
0	-2
1	-1
2	0



3)  $-6y = -2x + 1$

$$y = \frac{-2x + 1}{-6}$$

x	y
0	-0,16
1	0,16
2	0,5



(A)